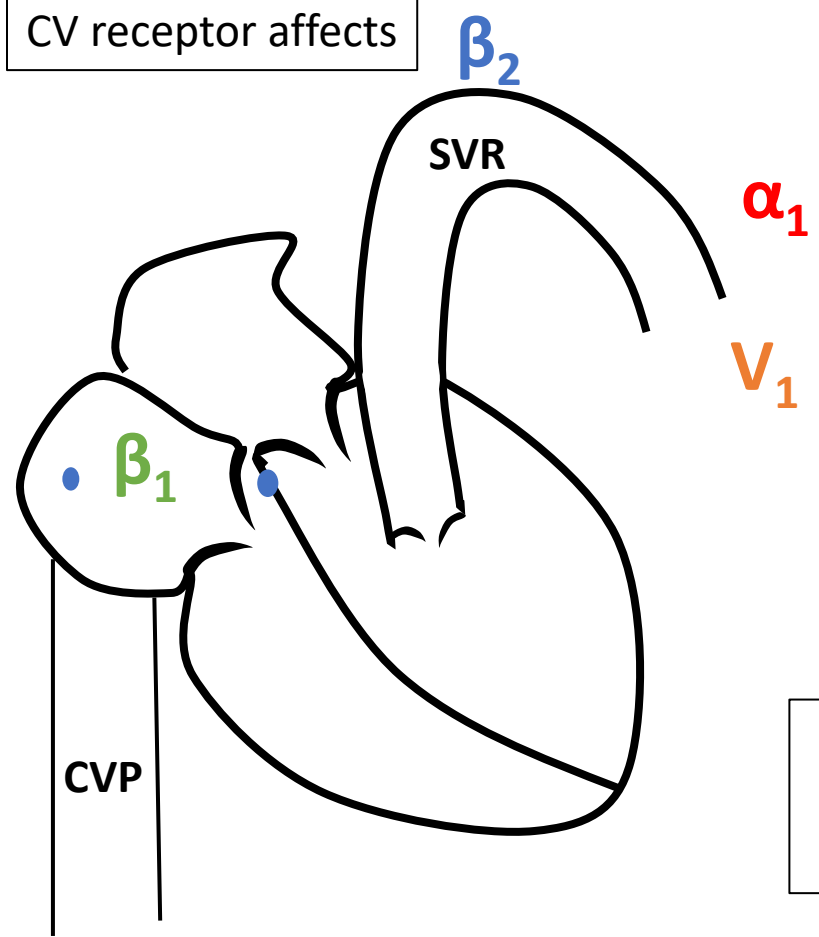


Objective 2:
CV receptor affects



Objective 3:
Pressor Affects
and Uses

Objective 1:
Physiology of Shock

	Preload (CVP)	CO	Afterload (SVR)	Treatment
HYPOVOLEMIC				
CARDIOGENIC HF, valvular, arrhythmogenic				
OBSTRUCTIVE PE, PTX, tamponade				
DISTRIBUTIVE Sepsis Neurogenic Anaphylactic Adrenal crisis				
Norepinephrine				
Vasopressin				
Epinephrine				
Phenylephrine				
Dobutamine				
Dopamine				