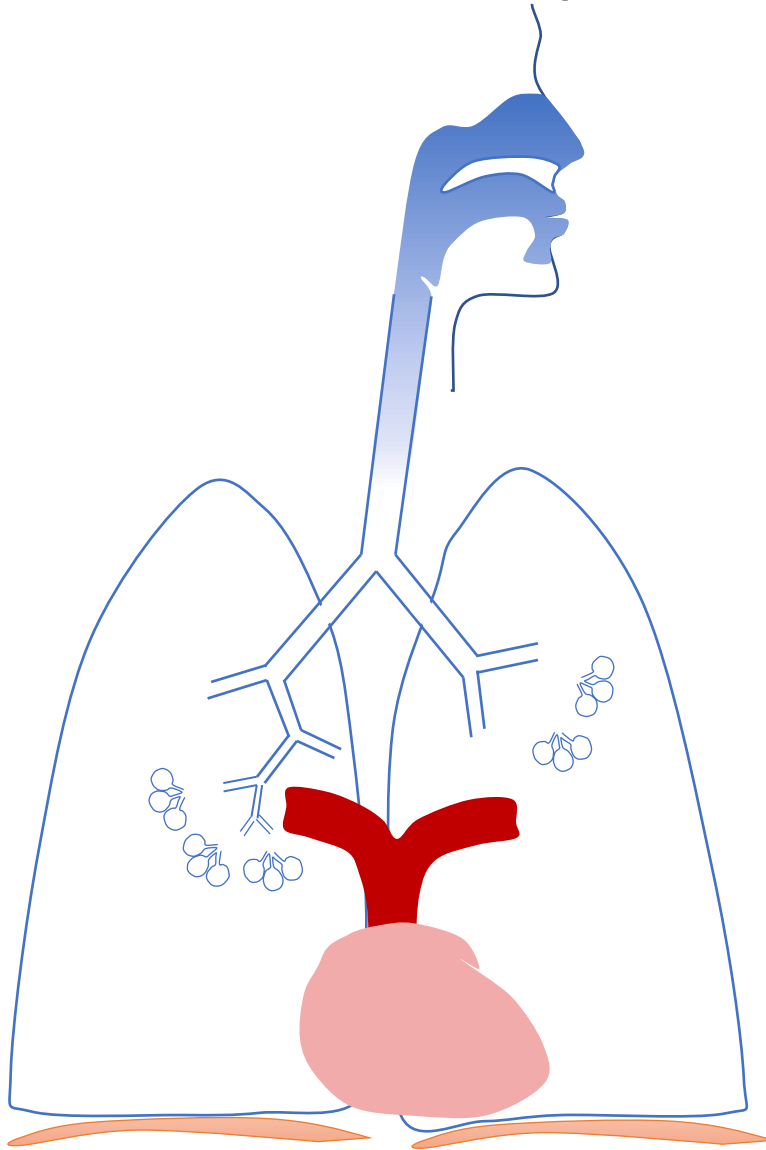


Inpatient Evaluation Of Acute Dyspnea And Hypoxemia



Differential Diagnosis

Evaluation

RESPIRATORY

Airways

Alveoli

Vessels

MUSCULOSKELETAL

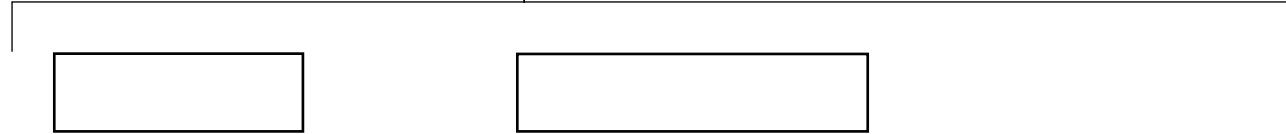
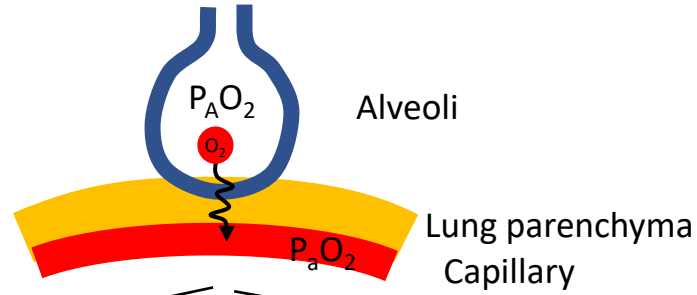
CARDIAC

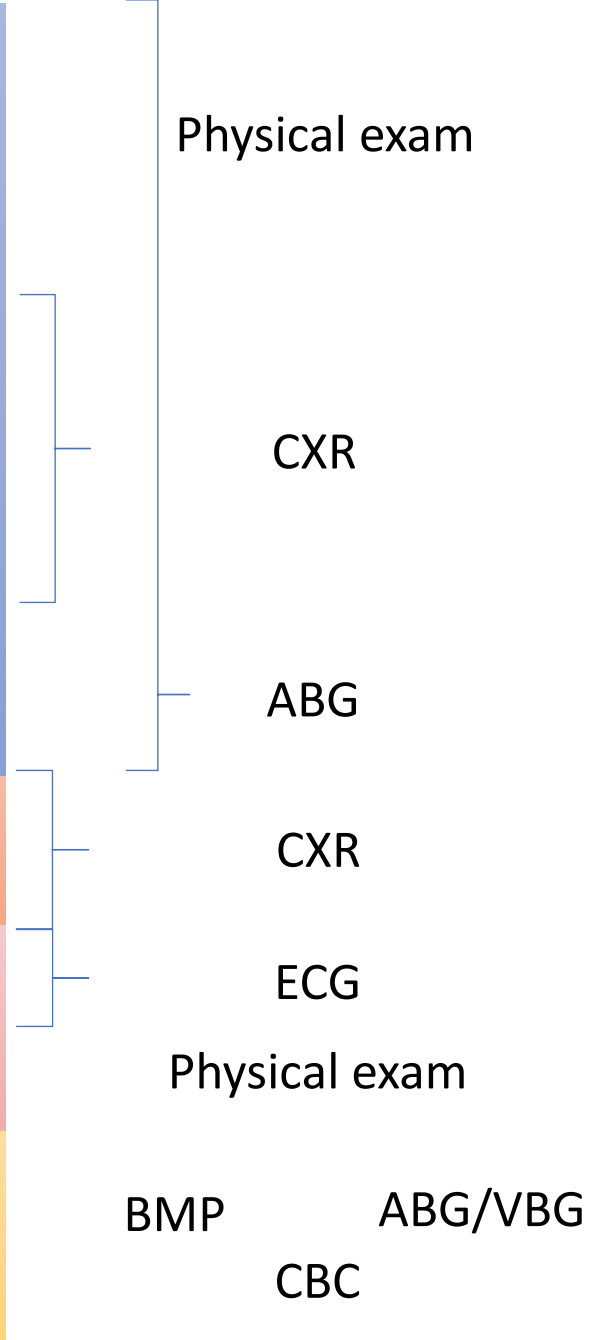
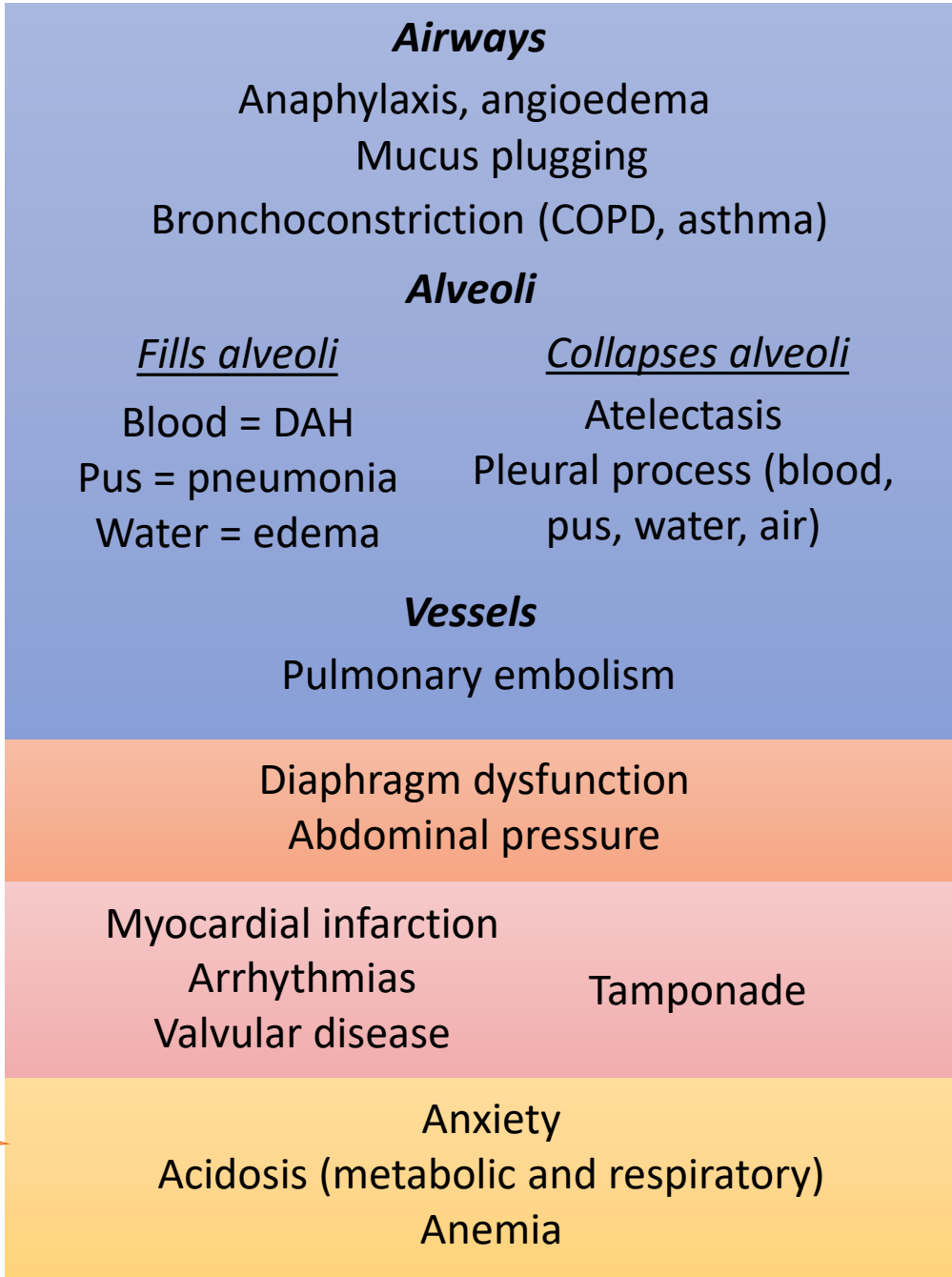
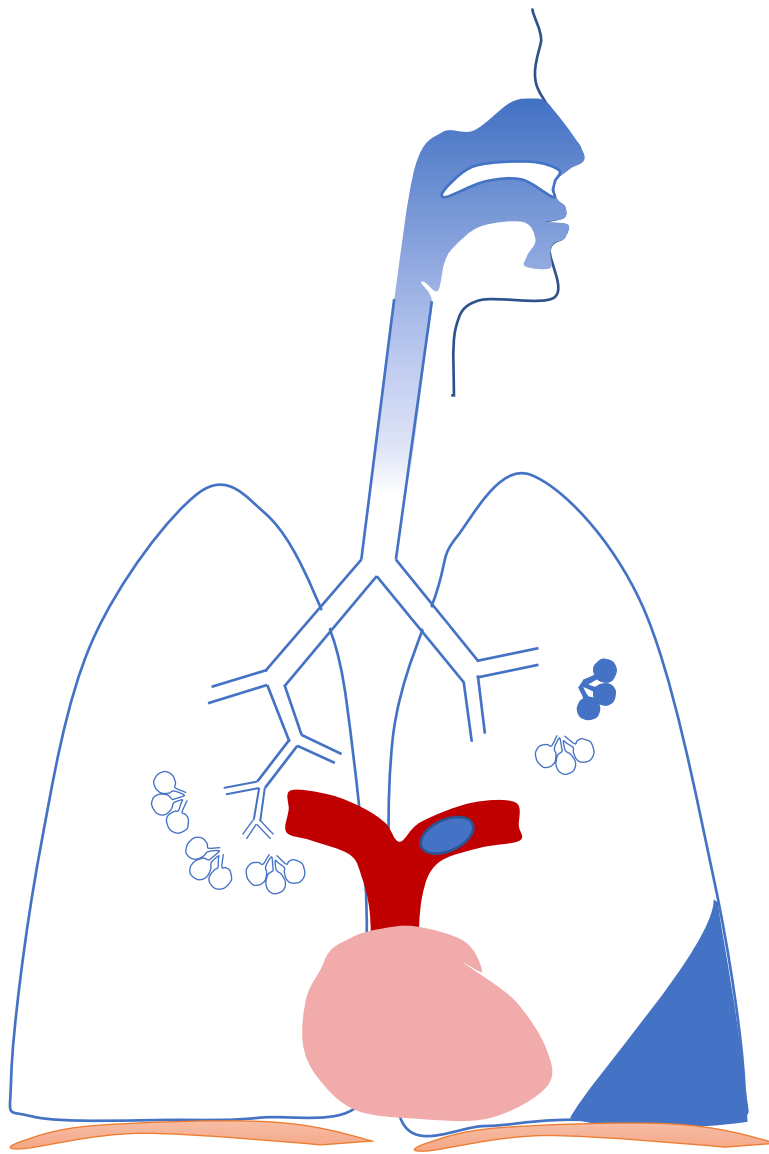
OTHER

Inpatient Evaluation Of Acute Dyspnea And Hypoxemia

Causes of Hypoxemia
($\downarrow P_aO_2$)

$P_AO_2 =$

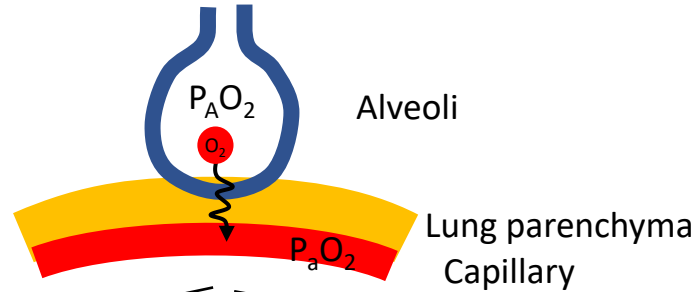




Inpatient Evaluation Of Acute Dyspnea And Hypoxemia

**Causes of Hypoxemia
(↓P_aO₂)**

$$P_{A}O_2 = FiO_2 \times (P_{atm} - P_{H_2O}) - P_aCO_2 (1.25)$$

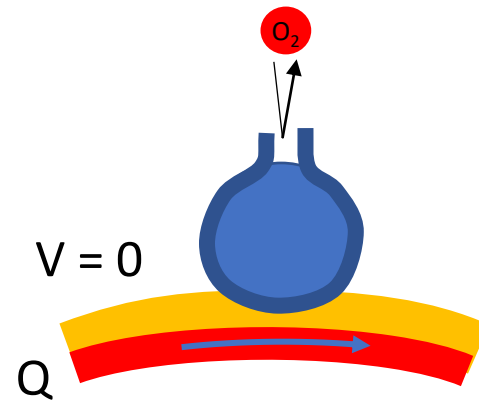


Normal A-a gradient

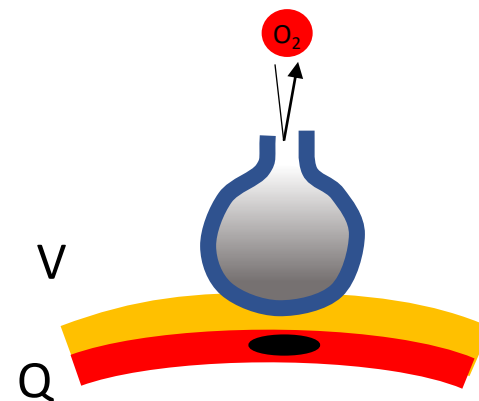
Hypoventilation (↑PCO₂)
↓FiO₂

Elevated A-a gradient

Shunt



V/Q mismatch



↓diffusion